

# News & Ale



Campaign  
for  
Real Ale

**FREE**  
**AUTUMN 2019**  
**No. 140**



## **THE CROWN, HORSELL** **Winner of the Surrey Pub of the Year**

The quarterly CAMRA magazine for beer drinkers in Surrey,  
Kingston-upon-Thames, and the Surrey/Hants borders



# HARVEY'S BREWERY

UK BREWER OF THE YEAR

*Harvey's Brewery is proud to announce  
the following awards at  
CAMRA's London & South East Area  
Champion Beer of Britain Competition 2018*

## Old Ale GOLD

Old Ale and Strong Mild Winner

## Imperial Extra Double Stout JOINT SILVER

Real Ale in a Bottle Category

## Sussex XX Mild Ale

## BRONZE

Mild Category



*"Brewed in the Heart of Sussex"*

WE WUNT BE DRUV

[www.harveys.org.uk](http://www.harveys.org.uk)



/HARVEYSBREWERYLEWES



/HARVEYS1790



/HARVEYSBREWERY



## 2019

News and Ale is back and will return to a quarterly publication. We live in an ever-changing world and there is a lot happening in the world of real ale. Many pubs are closing or changing ownership, new micro pubs are opening and new breweries are starting up.

It is important for CAMRA and the readers of this newsletter to know the latest changes in the brewing industry. This newsletter tries to bring the reader the latest news but it can only do so if the editorial team is kept up to date with news developments.

If you know any changes to a pub, a pub closure or simply want to provide information on current beers a pub is serving then please let us know using the email below.

Cheers!

Brian

**To Advertise in the News and Ale please contact:**

**Neil Richards MBE**  
**Of Matelot Marketing Ltd**  
**On 01536 358670**  
**Or E-mail [n.richards@btinternet.com](mailto:n.richards@btinternet.com)**

**To submit an article or pub clips please E-mail the editor:**

**[newsaleshb@camrasurrey.org.uk](mailto:newsaleshb@camrasurrey.org.uk)**

**The copy deadline for the next issue is 16<sup>th</sup> October.**

© 2019 Campaign for Real Ale Ltd  
230 Hatfield Road, St Albans AL1 4LW  
Tel: 012727 867201 Fax: 01272 867670  
Website: [www.camra.org.uk](http://www.camra.org.uk)

### Standard Disclaimer

Views expressed in this Magazine are those of the individual authors and not necessarily supported by the editor or CAMRA

## CAMRA Surrey Key Contacts

### CAMRA DEPUTY REGIONAL DIRECTOR SURREY

Kevin Travers  
[shb@camrasurrey.org.uk](mailto:shb@camrasurrey.org.uk)

### EAST & MID SURREY

Roy Golding  
[eams@camrasurrey.org.uk](mailto:eams@camrasurrey.org.uk)

### KINGSTON & LEATHERHEAD

John Burns  
[kandl@camrasurrey.org.uk](mailto:kandl@camrasurrey.org.uk)

### NORTH SURREY

[contact@camrasurrey.org.uk](mailto:contact@camrasurrey.org.uk)

### SURREY/HANTS BORDERS

Kevin Travers  
[shb@camrasurrey.org.uk](mailto:shb@camrasurrey.org.uk)

### NEWS AND ALE EDITOR

Brian Bourne  
[newsaleshb@camrasurrey.org.uk](mailto:newsaleshb@camrasurrey.org.uk)

### Facebook

<https://www.facebook.com/#!/groups/32941693296/>

### Twitter

<https://twitter.com/shbcamra>

# Making the Pub Code Work



Long time readers of News & Ale will have followed the regular articles that we have published about the importance of protecting pubs at both a local and national level. Pubs are one of the few places where you can meet people in a relaxed, social environment. With community centres up and down the country closing, pubs offer a vital hub for locals to get together as a community. Pubs are also taking an active role in tackling loneliness – whether that’s running lunch groups, chatting to regulars or just providing a place for people to meet. Pubs are so important to simply enjoying life and yet it is incredibly difficult for our landlords to make a decent living and it shouldn’t be like that.

CAMRA has long been campaigning for a level playing field between the pub owners and publicans and one outcome of this was the introduction of the Pubs Code in 2016. This was designed to address the imbalance of power between pub companies and tenants, in which pub companies (pubcos) are charging inflated rents and preventing landlords from buying beer on the open market, running them out of business. The Pub Code looks to regulate the tenancies of large estates of tied pubs in England and Wales,

enforced by a Pubs Code Adjudicator, who has the power to impose financial penalties on pub companies who don’t follow the Code, and arbitration powers to settle disputes between pub companies and tied tenants.

Since its introduction, CAMRA has raised concerns about the failure of some pub companies to act within the spirit of the Code, and has drawn attention to ways in which it believes the legislation could be improved. When Parliament brought in the Pubs Code, its intention was for “Market Rent Only” arrangements to be a realistic option for publicans - but in reality, the number of pubs which have been able to adopt such an arrangement and break free of supply ties has been very small.

The Government is required to review the Pubs Code and the Adjudicator’s performance regularly and the first review covers the period to 31 March 2019. CAMRA has submitted evidence to the review which can be downloaded using the link [https://www.camra.org.uk/campaign\\_resources/policy-submission-to-the-pubs-code-and-adjudicator-statutory-review/](https://www.camra.org.uk/campaign_resources/policy-submission-to-the-pubs-code-and-adjudicator-statutory-review/)

**Kevin Travers**

**Save your local pub from extinction**

**Make the Pubs Code work for tenants**

**#saveourpubs**

**CAMRA**  
CAMPAIGN FOR REAL ALE

## Local Pub Campaigning and news

It has been a relatively quiet time recently for local pub campaigning, but there are still a number of changes to report and pubs under threat that we are keeping a close eye on

The freehold of the **White Lion, Aldershot** is owned by a private owner and is leased to Triple fff Brewery. Our current understanding is that the freehold is/has been bought by another owner and Triple fff Brewery is seeking to take out a new lease. The Aldershot Civic Society has applied for the pub to be listed as an Asset of Community Value (ACV)

Planning permission has been granted to convert the **Cambridge Hotel, Camberley**, which has been closed since July 2016 into 21 residential flats, including demolition of the existing ground floor rear extension, and conversion of the historic building. The ground floor is to become a "flexible space" with permission for retail, restaurant/cafe, and/or public house uses granted.

**Hoxon, Camberley** – this bar restaurant, that served a full range of Ascot Brewing Company bottled beers closed in March.

**Castle Inn, Farnham** – reopened in February as part of the Red Mist group of pubs, for many years it has been a Belgian restaurant.

Sadly, there has been a significant change at last year's, Branch Pub of the Year, the **Jolly Sailor, Farnham**. Landlord and landlady Ian and Sarahjane left the pub in March and since then the pub has been under temporary management. The beer range has reduced though a recent visit discovered there were still 4 real ales available, including a couple of guest beers. So, although licensee and beer range have changed this pub should still be supported. Of greater concern is that the freehold of the pub is now also available at £395,000 which demonstrates that Greene King appear to have little interest in its long term future.

A new craft beer bar and bottle shop **Growlers and Cans, Guildford** opened near the top of Guildford High Street in February. There is seating for approx 20 people. No draught real ale is served, but there is a selection of 6 keg beers available and a wide variety of beers in cans and bottles to sample both on the premises or to take away.

**Robin Hood, Knaphill** – the pub burnt down on Sunday 12<sup>th</sup> May, after being closed for the past year and there had been a recent attempt to demolish the pub last year that was stopped as it broke planning regulations. Within a week of the fire the remains of the pub had been demolished.

**Jolly Farmer, Puttenham** – this former Harvester has been reopened as an independent pub restaurant.

**Pound Pub, Woking** – the pub closed in March after the Council revoked its licence following the sale of alcohol to a minor on two occasions.

*Colin & Daniela offer you a very warm welcome to*

## The Running Horse

— Leatherhead —





Kingston & Leatherhead Branch Joint Pub of the Year 2013

Food served Monday to Saturday  
Lunch 12noon – 3pm & Dinner 6pm – 9pm

Traditional roasts served every Sunday 12noon – 5pm

Function room available for birthdays, weddings, anniversaries & more!



**Telephone 01372 372081**  
38 Bridge Street • Leatherhead • KT22 8BZ  
[info@running-horse.co.uk](mailto:info@running-horse.co.uk)



## THE GREYFRIAR

The Greyfriar is a picturesque country pub, set in the charming Hampshire village of Chawton, just outside Alton and right opposite the world-famous Jane Austen House Museum. We serve high quality pub food - which is made fresh on the premises, real ales and great wines in the Greyfriar's traditional low-beamed 16th century bar & restaurant.

We are a child and dog friendly pub, with a pretty, sheltered beer garden at the rear. There is also a light & airy upstairs function room, which is available for booking for private parties.

Open every day from noon to 11.00pm (10.30pm Sunday)  
 Kitchen open: Monday to Saturday 12.00 - 2.30pm & 6.00pm - 9.30pm  
 Sunday 12.00 - 5.00pm

Winchester Road | Chawton | Hampshire | GU34 1SB  
 Telephone: 01420 83841

[www.thegreyfriar.co.uk](http://www.thegreyfriar.co.uk)

Triple *fff* Brewery

# THE WHITE LION



**PRIZE WINNING ALES**  
**LIVE MUSIC**  
**QUIZ NIGHTS**  
**ROCK AND ROLL BINGO**  
**SKY/BT SPORTS TV**  
**GARDEN**  
**DOGS WELCOME**

**01252 323832**

20 LOWER FARNHAM ROAD,  
 ALDERSHOT, HAMPSHIRE. GU12 4EA

# Surrey/Hants Borders Branch Awards 2019



Surrey Hants Borders Branch of CAMRA is delighted to announce the winners of our Pub, Cider Pub and Club of the Year competition.

## BRANCH PUB OF THE YEAR AND SURREY PUB OF THE YEAR

### CROWN HORSELL

For the first time in a number of years Surrey Hants Borders Branch has a new Branch Pub of the Year. The top pub in 2019 is a first time winner of the award, the Crown, Horsell, serving up an excellent range of real ales including a good selection from Thurston's Brewery located just two doors down the High Street. The pub has been a long time supporter of quality real ales, having been a constant feature in CAMRAs Good Beer Guide since 2012. Three hand pumps are reserved for Thurstons, whilst the other three serve beers from other local breweries and a few from further afield.

With over 200 pubs to choose from, it wasn't an easy task to pick a winner, but the Crown is a worthy winner. The award isn't just about the excellent range of beers Antoinette and John sell, but also about their high quality as well as the warm and friendly atmosphere at the pub. At a time when some pubs are struggling to survive it's great to see a pub doing so well by concentrating on simple things such as great beer. All the Surrey branch pubs of the year are put up for the Surrey Pub of the Year and the Crown is now also the Surrey Pub of the year. Well done to Antoinette and John.

## BRANCH CLUB OF THE YEAR

### RAILWAY AND ATHLETIC CLUB, WOKING

Unlike the Crown, the Branch Club of the Year is no stranger to recognition as 2019 is the 5th successive year the club has won the award. This friendly and lively social club is tucked away near Victoria Arch, serving an ever-changing selection of ales, often from local breweries, normally three at a time. One side of the bar is sports orientated, with darts, (free to play) pool and Sky Sports, while the other side is quieter. CAMRA members are welcome at all times, simply show a CAMRA membership card or copy of the current Good Beer Guide, in which the Club is an entry.

## HIGHLY COMMENDED CLUB

### GUILDFORD HOSPITALS' SOCIAL CLUB

Whilst the Railway & Athletic Club may have won the Branch Club of the Year Award for a number of years, it was far from a foregone conclusion. In recognition of this we are also awarding to Highly Commended Certificates in recognition of other local clubs that are great supporters of real ale. The first of these is the Guildford Hospitals' Social Club which is the social club at the Royal Surrey Hospital, Guildford. The club is only available to the 900 staff and members of the Hospital Trust and not patients, although CAMRA members are welcome to visit for a drink.

## HIGHLY COMMENDED CLUB

### ELSTEAD ROYAL BRITISH LEGION CLUB

Our second highly commended award has gone to the Elstead Royal British Legion Club. This club is housed in a wonderful timber-framed Grade II listed 16th century former farmhouse, in the village of Elstead. The club has a strong pubby feel and CAMRA Members are welcome to visit for a drink, where Sharps Doom Bar is supplemented by a couple of guest beers.

## BRANCH CIDER & PERRY PUB OF THE YEAR

### STAR INN, GODALMING

The Star, Godalming shines as a beacon for supporting real cider, when few other pubs in the area do, whilst still selling an excellent range of real ales too. However the Star is especially renowned for its selection of ciders and perries, with around six from an ever changing range, sourced by landlord, Andy Mounsey, directly from the National Cider Farm in Sussex. The Star usually stocks a draught mead and there is also a separate Stable Cider Bar in the garden which serves a different range of ciders together with a single real ale. This bar is open Thursday to Sunday. The Star has also been awarded the Surrey and Sussex Regional Cider Pub of the Year.

# The Grumpy Old Man examines the issue of music in pubs and at beer festivals



Before we get on to the music there is an aside as related by a CAMRA friend of mine. He was served what looked to be a very short pint, but thought it might be explained by a lined glass. When he asked whether this was indeed the case he received the strange reply that there was no inside lining involved and it was just an ordinary glass!

In the past with a responsibility for beer festivals that inevitably made me the 'complaints department' and I can assure you that music is top of the list when it comes to the 'moaning brigade'. Inevitably, the first question is why is any form of music required at all when a quiet session would be infinitely preferable. These people rightly point out that music destroys the art of conversation as you need to shout to be heard and inevitably end up with a sore throat. I have experienced rock bands inside pubs where not only is the conversation impossible, but the vibrations through the chest seem to be setting off a form of arrhythmia and a thumping heart beat which would probably justify a visit to the local A&E let alone the less seriously problems of headaches and deafness. I was also wondering what might happen to the beer with all those decibels being pumped around. Has anybody done any research on this? Also have you noticed that these bands bring along their devotees who spend the whole evening sipping the solitary drink and I am never sure how the economics of putting on this type of event works.

We have now broached the second question of why does the music have to be so loud? However, I can understand one advantage of over-bearing music in that it drowns out the utterances of bores and other more offensive types peddling a variety of nonsense. I have been lucky in that I have not encountered recently three individuals and the first of which talked at me for two and half hours about the closure of a direct rail link from London Euston to Shrewsbury. For heavens sake how long can anyone take such a repetitive monologue? Now I know that my marbles will deteriorate with age, but does that process have to be accelerated by zero intellect *Mail* readers warbling on about Strictly (I think that has something to do with dancing), Bake Off (mind numbing television) or conversation about members of the Royal Family of which I have absolutely no knowledge or interest. I am sorry, but I will also have to include 'beer tickers'

in this category which, by the nature of the subject leads to conversations heading down very narrow streets indeed. "I only need (they mean want) sixteen at Grimsby, but should I go to Cardiff instead where I can get 18, but I can get more breweries at Grimsby!" If you do not know what I am talking about then you are very lucky and I would leave it at that if I was you. At least they are harmless which is more than I can say for the xenophobic 'hang em and flog em brigade' where they always know better than anybody else including specialists and experts (so called in their opinion) with some 'interesting' solutions involving tirades about juvenile delinquency, immigration, prison sentencing, soft teachers, social workers and many more and not to forget the EU in all of this. It was never ending and instead of waiting for them to drive off in their white van I really should have said "excuse me while I turn the juke box on" (and preferably to a high volume) and where is that loud rock band when you really need them?

The third complaint centres on the issue of the music being of the wrong type with a plethora of alternatives being suggested. Why don't you have a jazz band? I am sorry but, all jazz seems the same to me and is probably a minority interest largely confined to advanced geriatrics. Why don't you have folk musicians or sea shanty singers? Please not as I find such music somewhat introverted with self-indulgent intensity without any general appeal, but having the sole advantage of not needing to go to A&E because of the volume. What don't you have an Irish ceilidh band? Please save me from this which might be fine for an intimate pub environment, but not for larger auditoriums of the beer festival. When I was younger the juke box carried a very limited repertoire of the popular hit records of the day (remember records?) Now, and with modern technology, the range is enormous and you can almost summon up any piece/style of music, but creates the disadvantage of hearing the long forgotten and often for very good reason. I remember sitting through what I considered to be an unintelligible dirge from Pink Floyd whilst everybody else around me thought it was wonderful. Somebody else put on Russ Conway (you have to be of a certain age to know of his existence) which they must have liked to have spent their money on it, but it really belonged to a best forgotten and abandoned era. It

just goes to show that with music you cannot please all of the people for all, if any, of the time and is probably best not to try.

Let's finish where we began with another aside from the issue of music. Whilst working at a recent beer festival on the cider bar a pair of men in the 40s politely told me in all sincerity that I had made a mistake by

forgetting to put any gas in the cider. They were for real and apparently believed that I should have 'pumped it up' before serving with a handy CO2 cylinder! What can you say to that?

**Bob Southwell**

*AKA the Grumpy Old Man*

## 26th CAMRA Woking Beer Festival

### November 8th and 9th 2019

This year's Woking Beer Festival will be held in Woking Leisure Centre in November, Friday 8<sup>th</sup> evening (6-11), Saturday 9<sup>th</sup> lunchtime (11-3.30) and Saturday evening (6-11). We will have over 60 Real Ales available along with ciders, perries and imported beers. Unlike many other festivals all beers will be available at all sessions (subject to quality).

We have refreshed the event by reintroducing live music in the Main Hall for each session, we have increased the food options and now there is a Gin Bar and a Wine Bar.

The Wurlitzer organ will not be playing so the renamed "Cellar Bar" will be a quiet hall with extra

seating serving Gin, Food and Beer plus the CAMRA membership stand.

Wine will be available in the Main Hall together with Imported Beers, Cider, Perry, Beer and (of course) the Tombola.

Advance tickets cost £10 per session (includes programme and festival glass) and are now on sale at [www.wokingbeerfestival.co.uk](http://www.wokingbeerfestival.co.uk). Current card carrying CAMRA members get a free pint (up to 5% ABV) at the CAMRA membership stand and new members will get TWO free pints!

Further details and staffing forms can be found at [www.wokingbeerfestival.co.uk](http://www.wokingbeerfestival.co.uk).



**Thursday, Friday & Saturday**  
**31<sup>st</sup> October – 2<sup>nd</sup> November 2019**  
 Merstham Village Hall, Station Road North,  
 Merstham, RH1 3ED  
 Thursday & Friday: 12 noon – 11 pm  
 Before 4 pm £2 After 4 pm £3 (Thursday) £4 (Friday)  
 Saturday: 12 noon – 6 pm (while stocks last) **FREE**  
**66 Cask Ales 10 Ciders and Perries**

Festival Charity  
**ST CATHERINE'S**  
**HOSPICE**  
 Hospice Care in West Sussex &  
 East Surrey



[ems.camra.org.uk](http://ems.camra.org.uk)



**26<sup>th</sup> woking beer festival**  
 at woking leisure centre

**fri 8 november: 6 - 11 pm**  
**sat 9 november: 11 am - 3.30 pm**  
**sat 9 november: 6 - 11 pm**

**over 60 real ales**  
 plus ciders & imported beers  
**FREE pint** for card carrying CAMRA members

**hot & cold food**

**gin & wine bars**

**live music**

**group discount**  
 buy 11 tickets for the price of 10

**tickets £10<sup>\*</sup> in advance** includes a pint glass & programme

book online: [www.freedom-leisure.co.uk/wokinglc](http://www.freedom-leisure.co.uk/wokinglc)  
<sup>\*</sup>£2 charge per booking for online credit/debit bookings






freedomleisure where you matter

# Pub News Roundup



## ALDRSHOT

### Garden Gate

Friendly local with back room for TV, plus sheltered garden. Smartly refurbished in white with new wall pictures. Four beers normally on tap, reliably in good condition, often from local breweries. Example beers include Surrey Hills' Ranmore Ale and Shere Drop St. Austel Tribute, Twickenham Grandstand and Naked Ladies and Timothy Taylor's Landlord. **John E**

### White Lion

The White Lion is a proper "wet" pub with a local atmosphere serving Triple fff beers and a changing guest. Triple fff Altons Pride (3.8%) and Moondance (4.2%) are always available as is their mild, Pressed Rat & Warthog (3.8%) is generally available. One Friday evening during an impromptu gathering they had Triple fff Lady Eleanor (4.6%) and their seasonal beer for the rugby, Forward Pass (5.0%). Westons Rosie's Pig (4.8%) is also on handpump. Saturday night bands play approximately fortnightly and the Thursday night Quiz alternates with Rock 'n' Roll Bingo. **PB**

## ASHFORD

### The Kings Fairway

1 bank of 5 handpumps and another bank of 3 but can be annoying when you visit only to find 3 real ales on. Camra discount applies except on Mondays when it is already discounted. Food available 7 days a week. Another busy pub. **Les Strange**

### The Kings Head

Refurbished to a high standard by Marston's. This is a community local where you can grab a coffee and some cake in the mornings or sink a few pints after finishing work. There are 4 real ales including Pedigree and Saddle Tank, plus 2 ever changing beers from the Marston's range, there is a restaurant at the side of the main bar. This is the cheapest real pub that I have visited in our area and you also get a Camra discount on top of low prices. **LS**

## ASH VALE

### The Admiral (Admiral Napier)

After a major refurbishment this pub has re-opened as the newly-named 'Admiral'. The original name the 'Admiral Napier' commemorated a famous admiral of the early 19th century, whose exploits included burning down the White House. The new licensees Wez and

Victoria Tunshead have come down from Manchester to make it into the 'best pub in the area' with good food and good beers. **William Hill**

## BAGSHOT

### Foresters Arms

New leaseholder came here a few months ago and made significant improvements including the outside area creating a children's play area and a beer garden. The food side seems to be doing nicely and 2 or 3 cask ales, including the excellent Welton's Horsham Old. **Doug Fish**

### King's Arms - (Hungry Horse)

Still much as before, generally serving only GK IPA and/or Abbot. At times like Halloween and Xmas may have a Guest beer, generally from GK's extensive list of takeovers! I don't normally partake here but when I do the beer's okay. **DF**

### Three Mariners

Change of leaseholder recently. Now not open till 3 pm Mon/ Tues. Still maintaining five cask ales. The beers on were Doom Bar, Black Sheep Bitter, Proper Job, TEA, and Landlord. When I asked which were the 'regular' ones and which changed it seems that they're all pretty regular. **DF**

### White Hart

New leaseholder, Rupert, came in here a few months ago and the place has had a bit of a refurbishment. The pub only opens in the afternoons now, 4-11 Mon-Thurs and 3-11 Fri-Sun. It generally has Otter Ale and Harveys/ Sussex Best on. Had half of the latter, which was pretty good. **DF**

## BLACKBUSHE

### The Bushe Cafe

Large patio area with a decent food menu which includes a specials boards and a Polish food board. There is a range of Bottled Beers including Spitfire, Old Speckled Hen, Tywskie and Bottled Conditioned Beer Pedigree - Families and Dogs Welcome, large car park. Great views over the airport and often historic and interesting aircrafts fly in. A decent spot for a beer and some plane spotting to at the historic airport which opened in 1942 as a Bomber airport during WW2. **Neil Thomas**

## BLACKWATER

### Mr Bumble

This pub is run by Philippa and Keith. A flexible arrangement with Enterprise enables them to provide a wide range of real ales and two craft ales on draught (Punk IPA and Lagunitas). London Pride is the regular beer with generally three others available from a wide range such as Gold Cup from Ascot brewery, which was in excellent condition. My taste buds were teased by looking at their “What’s coming soon” pole, (every real ale pub should have one). This is the busiest pub in the Blackwater/Frogmore area and a good place to socialise. They have open mic/Jam nights on Thursdays and live rock bands on Saturdays. There are three pool tables and an extensive rear sheltered patio for smokers and others who wish to be outside. If you are in Blackwater and looking for a lively pub, this is the place to go. **Harry Fish**

## BRAMLEY

### Jolly Farmer

This is a busy free house serving up to 8 ever changing beers mostly from micro, local and regional brewers. There is a front bar area and a large rear area filled with tables. The pub serves an excellent range of food and the Sunday carvery is very popular (advance booking is recommended). The pub also does accommodation. Well behaved dogs are welcome everywhere in the pub (not just the bar area as suggested in the last N&A ed.). Current beers include beers from Green King (IPA), Crafty Brewing (Hop Tipple IPA, Dunsfold Best), Milestone Brewing (Colonial Pale Ale), Deeply Vale (Citra Storm) and Wigan Brewhouse (Gin Pit). **BB**

## CAMBERLEY

### Bear

Formerly the Ancient Forester, then Square Bar, Sully came here about 6 years ago, renamed it, and turned it into a modern, cosmopolitan pub. The wide-ranging menu (from sandwiches to “Chef’s Signature Dishes”, and Sunday roasts) attracts many throughout the day from the nearby shopping areas, with an equally-wide range of drinks for the evening trade. The 2 cask ales (Fullers/London Pride and St Austell’s/Tribute) are supported by draught cider (Old Rosie) and lagers including Koze! and Peroni: clipboards display dozens of bottled Continental and Craft beers, so we’re spoilt for choice! Quiz Night on Mondays, and live music on Thursday evenings. **DF**

### The Cabin

The Cabin has a rustic décor and serves a large selection of bottled beers from many breweries including Badgers, Wadworth, Ringwood, Marston’s, Theakston, Hog’s Back, Sharps, Wychwood, Fullers, and St Austell. The latter features not only Tribute, but also a “bottle-conditioned” Proper Job, which is popular with many of the regulars. The broad mix drinks has resulted in good support throughout the week, in particular on Friday and Saturday nights. Their Sunday afternoon live music sessions are also popular featuring Roots, Country and Blues music some weeks alternating with “open mic” sessions. **HF**

### Carpenters Arms

Now being a Greene King pub, the regular ales are Abbot and IPA, but they also have Guest ales. This pub gives a useful discount of 10% for cask ales to card-carrying CAMRA members. Popular for good-value meals and they often have live music on Friday or Saturday nights. **DF**

### Claude du Vall

Camberley’s Wetherspoon is easily reached by bus or train and has a south facing aspect which is rather pleasant in the sun. As well as the core “Spoons” Real Ales, guests have recently included Bowman – Yumi (3.9%), Windsor & Eton – Last Drop (4.0%), Bingham’s – Space Hoppy IPA (5.0%) and Salopian – Panacea (5.0%). Handy for Sunday lunch and then hop on a No. 1 bus to other pubs on that route. **PB**

### Royal Standard

Louise took over as Manager here a year or two ago now – another welcome to Camberley! This spacious pub is popular throughout the day, having competitively-priced menus (including one for Senior Citizens, and I enjoyed the ‘All-Day Breakfast’ recently!) as well as a range of draught and craft beers and entertainment of various sorts in the evenings. The ‘mainstay’ has surely been Jan who’s worked here for about **25 years** now and also organises fund-raising events for local charities etc. A Greene King pub and their IPA and Abbot are the regular cask ales here with an occasional Guest ale. There’s a discount of 10% to card-carrying CAMRA members. **DF**

*Continued on Page 14*

# 25 Years of Unbroken Service

## Theresa at The Crossways, Churt

Some folks celebrate the 4<sup>th</sup> July as Independence Day. Well, it's also an important day for one of the Branch's favourite pubs. The Crossways at Churt and Independence Day is appropriate as the pub is nowadays independent of tie to any brewery or pubco, which means that we were able to celebrate the day with a great range of 'independent breweries' beers. The day in question was the anniversary of the date when landlady Theresa Ewens and her late husband Paul took over the pub 25 years ago, making her one of the longest serving publicans in our area.



One group of retired local CAMRA members who have gained the name 'WMD' (William's Midweek drinkers) have a policy of gathering there at least once a month, converging on Churt from the surrounding area on the number 19 bus to sample the ales and the lunches. Sometimes as few as 8 or 9 attend, but usually there are more than a dozen and sometimes approaching the 20 mark. On the 4th July a number of us made a rare evening outing to the Crossways (there is no evening bus service), returning by taxi. Theresa generously provided a buffet for this special occasion and the ales were at the 1994 price of £1.50 a pint. A great evening was enjoyed.

For those who haven't visited, the regular beers on handpump are Hop Back Crop Circle, Loose Cannon Abingdon Bridge and Arundel Sussex IPA. There are usually two or three guest ales served direct from their casks in the cellar, which may come from Longdog, Lister's, Franklins, Frome, Red Cat, Loddon, Triple fff, Heritage, Ascot, Slater's or even Twt Lol. Those of us of a certain age prefer our ale properly "vented", i.e.

without excessive retained CO2 and Theresa's cellar skills meet our desire in this respect. A beer festival is held every July with up to 40 ales all served from the pub cellar. For cider enthusiasts there are always 2 or 3 real ciders and, in October a "mini" beer and cider festival takes place with about a dozen ciders alongside extra beers. The pub has a great garden but children are not normally permitted in the bars, of which there are two, both very traditional; a quarry tiled public bar with darts board and a wooden floored saloon area. Congratulations to Theresa on achieving this milestone although it is sad that her husband Paul couldn't share the festivities, having passed away some years ago due to lupus. Many thanks to Theresa for her hospitality and to her band of faithful local helpers without whom the festivals and other events could not happen.

Mike Andrew

### CAMRA'S Good Beer Guide 2020

**Special advance member's price of ONLY £12\***

VISIT - [shop.camra.org.uk](http://shop.camra.org.uk)

- The UK's **best-selling** beer and pub guide now in its **47th** edition, with detailed entries of **4,500** of the UK's best real-ale pubs
- A foreword by Brian Cox, consumer features and industry analysis by well established beer writers: **Emma Inch, Tim Hampson and Roger Protz**
- Unique Breweries section listing all UK real-ale breweries and regular beers with **hundreds** of CAMRA tasting notes

Sponsored by Cask Marque

**PUBLISHED ON SEPTEMBER 12<sup>TH</sup> 2019**  
RRP **£15.99**

\*RRP for members logged into the shop/hold inclusive of p&p/valid until 12th September 2019.

Campaign for Real Ale



*Village Pub*

The Crown, Horsell Village is  
delighted to be named

## **CAMRA Surrey Pub of the Year 2019**

John and Antoinette would like to say a  
huge thank you to staff, customers and  
everyone who voted for The Crown



***Why not join us for our Oktoberfest  
Sat & Sun 26/27 October 2019***

The Crown is a friendly, traditional, two-bar pub where real ale takes centre-stage

Home of award-winning Thurstons Brewery

Large sunny garden with boules terrain

The Crown, 104 High Street, Horsell, Surrey GU21 4ST

Tel: **01483 771719**

15 minute walk from Woking Rail Station

# Pub News Roundup



## Station Tap (Surrey Arms)

The Surrey Arms completed its comprehensive refurbishment in mid-May and is now re-named the '**Station Tap**'. Had a good chat with the new manager and they're still giving card-carrying CAMRA members a discount of 10%. The place has been 'modernised' a bit and the old hand-pumps replaced with new metal ones. There are now 10 taps coming through the back wall, some for craft beer and some for cider. Sadly, the Pool Table has now gone. Still 3 hand-pumps for Cask Ales and still with local breweries. Looks as though there's more attention given to the food side of things now. **DF**

## COVE

### Thatched Cottage

Closed on 15<sup>th</sup> June 2019 as Greene King decided not to renew the lease. **KT**

## EVERSLEY

### The White Hart

This traditional country pub changed hands a few months ago and is now run by Mark the landlord who has built a good rapport with the regulars and has developed the catering side in response to popular demand. The regular beers are Courage Best and London Pride, with a selection of guest beers by rotation. On my recent visit I tried the Courage Best, which is normally my favorite at this pub and it did not disappoint. On a previous visit I tried the Black Sheep, which was delightful. Mark has proudly displayed the plaque confirming that the White Hart was adjudged "excellent" under the Cask Marque scheme, a reputation he plans to retain for the future. This is a family-friendly and dog-friendly pub, with canine treats in jars on the bar and a fenced back garden for relaxing summer days and evenings outside. There is a back patio with big brollies and heaters for chilly evenings. **HF**

## CHURCH CROOKHAM

### Fox and Hounds

Caledonian have apparently stopped production of Edinburgh Castle (aka 80') or at least don't supply it this far south and so the house rebadged beer is now replaced with St. Austell Tribute on what I am told is a permanent basis. In cracking nick tonight! Also, on

at the moment is Ringwood Boondoggle. Courage are no longer supplying Kils of Best which gives the pub a real space issue in the cellar as they shift 2 kils a week! **Andy Gilbert**

## CHURT

### Crossways Inn

A group of midweek drinkers regularly use the Stagecoach service 19 bus from Aldershot via Farnham to visit the Crossways for lunch every month. Selection of beers available this year were Loose Cannon-Abingdon Bridge (4.1%), Hop Back – Crop Circle (4.2%), Loddon – Hullabaloo (4.2%), Cotleigh – Old Hooker (Still Game) (4.3%), Arundel – Sussex IPA (4.5%) and Red Cat – Mr M's Porter (4.5%). There's a selection of unpretentious main meals (with real vegetables!) for £9.95 and a daily special at £7.95. Open all day Friday and Saturday but shuts in the afternoon on other days, so pick your time carefully. Always a delight to visit, we only leave because we know we'll be back soon. **Peter Broberg**

## ENGLEFIELD GREEN

### The Armstrong Gun

There is an application for development on the pub site. **Les Strange**

### The Barley Mow

Overlooking Englefield Green with the Cricket on Sundays. Part of a gastro pub chain. The good news is a proper bar has been retained. The 5 real ales Timothy Taylor's Landlord (regular) and 4 changing guest ales. **LS**

### The Sun

Closed and up for sale. **LS**

## EGHAM

### The Crown

In the High Street next to Strodes College, often has several real ales. On a recent visit they were Dorking Pilcrow & Pacific Gold, Hogsback TEA, Tribute, Abbott and Doom Bar. Don't forget all ales are £2.75 on Mondays. **LS**

### The White Lion

An application has been made to build on the old stables block. **LS**

## ESHER

### The Albert

Former free house The Albert has reopened as a Fuller's pub. **Michael Pullen**

## FARNBOROUGH

### Tilly Shilling

Farnborough's Wetherspoon is easily reached by bus with the main railway station not far away. As well as the core "Spoons" Real Ales, guests have recently included Exmoor – Gold (4.5%), Fire Bird – Parody (4.5%), Rebellion – Roasted Nuts (4.6%) and Shepherd Neame – Bishops Finger (5.0%). **PB**

## FARNHAM

### Castle inn

Currently has two handpulls with local cask ales - Tilford and Hogs Back TEA. It is planned to increase to 4 hand pulls. Always a Tilford ale on. Food is available. Large eating area inside, covered terrace at rear and steps up to large grassed garden. Two function rooms upstairs comfortably seating between 10 and 20 people. **Mark Geeson**

## FLEET

### Hart House

Closed in mid-June and initially reported as sold to the Urban Village Pub Company who are refurbishing the pub and plan to reopen it in September, but nothing appears to have happened at time of the time of News and Ale publication. **KT**

## FRIMLEY

### Railway Arms

Closed in May, when the long-standing landlord left, but has since reopened. **KT**

### White Hart

Mark came in as Manager here a year or so ago, and I was glad to see that a dartboard was reintroduced to the 'Sports Bar', joining the Pool table. Mark has now moved on and Glen took over in December. This is a large pub but in the various inter-connected areas the predominance of wood gives it a warm, homely feel. Being in the centre of the village it's a popular spot for both food and drink at all times of the day and the patio area is well-used in good weather. As a Greene King pub, the regular ales here are IPA and Abbot and generally Doom Bar, sometimes also with a Guest ale. (There's a 10% discount on ales for card-carrying CAMRA members.) Gin-lovers will be pleased to know that there are up to 17 different gins on offer

with various types of tonic to go with them! Quiz Night on alternate Tuesdays and music on alternate Friday evenings. **DF**

## GUILDFORD

### Rodboro

Returning yesterday Jill wanted to go to the Rodboro, so to the Rodboro we went. Well, I've never seen a Collusion beer before only collaboration ones – I suppose the meaning's the same. Looking online I was enlightened, it's actually a regular brew and in fact the eighth time between Cobbetts and Surrey Hills. It was fresh hoppy aroma delicious and 5.2%. **J & J**

### Star

In a landmark judgement the noise abatement notice issued by Guildford Council has been overturned by a district judge. **KT**

## KNAPHILL

### Crown

New management in place with the pub undergoing a complete refurbishment inside and out including the kitchen. The pool table has been retained. On my visit there was one handpump serving Marston's 61 Deep Pale Ale. **BB**

### Royal Oak

Great 17th century inn with access onto waterers park - large beer garden at rear of the pub. Up to 5 Real ales on offer and 10 Real Ciders available. Discount for card carrying members. Families welcome and dog friendly. Children's play area in rear of the garden. Enjoyed a couple of Old Rosie in obviously a tankard! The pub has won the Woking 2019 Best Floral Public House. **NT**

### Nags Head

Large garden which is enjoyable during the summer months, 5 Real Ales on offer - mainly national breweries, had a pint of Bombardier not a bad pint. **NT**

## LALEHAM

### Feathers

Now re-opened as a pub after a re-fit by Marston's.

## LYNE

### The Royal Marine

A difficult pub to get to by public transport and quirky opening times. Has one regular and two guest ales. On last visit these were Greene King, Hammer Pot and Moorland's. **LS**

*Continued on Page 23*

# MEET THE BREWER



## Tillingbourne Brewery

It was a Tillingbourne Brewery tap-takeover at the Rodboro Building in Guildford and also meet the brewer night.



*Lee Nicholls at the Rodboro, he is one of the two founders of Tillingbourne Brewery.*

Lee explained how it began, his old school friend Steve Dodd invited him out for a drink in 2011 and even paid for their first beers - "That's when I knew he'd something on his mind". Did I want to start a brewery with him using the kit and site vacated by Surrey Hills Brewery? - "Yes, I did".

The branding of the brewery generally relates to place names in Surrey and of course the hop troll. The hop troll was an idea that came from a Scottish/Norwegian friend who when told about the Tillingbourne River commented that all bridges in Norway have a troll underneath. At this point what is now the beer Hop Troll was about to be called 7Cs and one of the seven hops used in it doesn't even start with the letter c. Even the cask colours, which are two orange bands and one green, relate to Surrey - they're the colours of Effingham Rugby Club.

Tillingbourne use Steve Dodd's uncle to do its pump clip work. The picture for Black Troll is based on the bridge of a now long-gone gunpowder mill in Shalford. Lee had the idea that a good competition to run would be can

you name the location on the Black Troll pump clip? Once the competition was started it lasted about ten minutes. A chap walked into the brewery named the location and claimed his box of the bottled beers.

Lee noted that "all the weird things happen when I'm on holiday." One time he came back to discover something new going on in the Brewery. It was project-X and was well underway. It was five thousand pints of their first, and probably last, sour beer which was subsequently named Surrey Sour. The beer went to Staffordshire for bottling and produced 7,000 units, of which there are now only about 1,000 left at the brewery. We were able to sample some of this beer at the Rodboro, it perhaps wasn't at ideal temperature but tasted like it could be a really cracking beer something like Thornbridge's Tart.



*There are not many pump clips that show the brewery's cask colours*

The beers available for sampling at the event were;

Tillingbourne, The Source  
Tillingbourne, Hop Troll  
Tillingbourne, Falls Gold  
Tillingbourne, Summit  
Tillingbourne, Surrey Sour

And the nine beers available at the bar were;

Tillingbourne, Falls Gold  
Tillingbourne, Hop Troll  
Tillingbourne, Black Troll  
Crafty Brewing, Dunsfold Best  
Crafty Brewing, Loxhill Biscuit  
Hogs Back, TEA  
Greene King, Abbot

## My Work Here is Done... Not Yet

Sharps, Doom Bar (£1.99 a pint)  
Greene King, IPA (£1.99 a pint)

*We have since learnt that Lee Nicholls is leaving the brewery next June to move to Canada for a few years. Steve Dodd is currently looking for a new business partner. **Ed.***



*Our Branch Chairman Mick Bell and Alex the cellar manager at the Rodboro Buildings.*

Julian and Jill

OPEN  
7 DAYS  
A WEEK

**COBBETTS**  
BEER SHOP  
MICROPUB

**GOOD BEER GUIDE**  
2019  
Made in the UK

Location: **23 West Street,**  
Dorking, Surrey. RH4 1BY  
Phone: **01306 879877**  
Email: [info@cobbettsrealales.co.uk](mailto:info@cobbettsrealales.co.uk)  
Web: [www.cobbettsrealales.co.uk](http://www.cobbettsrealales.co.uk)

@cobbettsrealale

## The Star Godalming



**Halloween Beer Festival**  
**October 25<sup>th</sup> - 28<sup>th</sup>**



**Ales from across  
the UK, as well as a fantastic  
selection of Ciders and Perrys.**

**CAMRA GOOD BEER GUIDE 2008 – 2012 & 2014 – 2018**  
**Surrey CAMRA cider pub of the year 2018**  
**Surrey & Hants CAMRA cider pub of the year 2013 – 2019**  
**Finalist at The Great British Pub Awards 2015/2016/2017/2018**

**17 Church Street, Godalming, Surrey**  
**Telephone 01483 417717 [www.starinnngodalming.co.uk](http://www.starinnngodalming.co.uk)**

# MEET THE BREWER



## Laine Brew Co.



Well, not actually meeting the brewer but the Laine's sales manager, Beth Hill.



*Veru (Robin Hood landlady) with Beth.*

This branch event was based on informal chats rather than a presentation and the Robin Hood was initially only open to CAMRA members so as to have free samples of all the Laines beers.

In my chat Beth explained that Laines is a pub company and a brewery and these two undertakings are separate entities. She works for the brewery but the two halves work next to each other but have almost identical senior

management. The pub chain includes pubs in SE and SW London plus north of the river. Some of these pubs are still owned by Star (Heineken) and there are complications about what beers can be put on. They currently have an arrangement with Punch to put on Laines short run beers. "So do Punch have unique Laines beers you can't get in a Laines pub?". "Err not entirely". Beth visits the Laines pubs fairly regularly and tries to get direct feedback on what is selling and not, she noted that "Some pubs need to move to non-cask only". "So, can you try beers and have authority to take them off because of quality problems?", "I like a pub that has a separate room for cask. But some cellars are small, so some are on vertical extraction some are not. I like to resolve problems".



*Beth and Abi with samples from Laines.*

The beers on were;

- Laine Brew Co, XPA light pale ale
- Laine Brew Co, Breaker pale ale
- Laine Brew Co, Source pale ale (keg)
- Laine Brew Co, Ripper session IPA (keg)
- may not sell that well in Leeds or Yorkshire?
- Laine Brew Co, Mango-licious Mango and passion fruit pale ale (yes, they brew some pale ales).

**Julian**

# Obituaries

---



## CHRIS STRINGER 1959 -2019



*Picture supplied  
by Glyn Baker*

It was with great sadness that we learned of the sudden death of Chris Stringer in January. Chris was a very committed and active member of CAMRA, probably best known as Regional Director for Surrey and Sussex. He also held other roles, notably assisting at festivals including the Great British Beer Festival (as cider bar manager), Sussex Branches Beer & Cider Festival, North Sussex's Equinox and Ardingly Festival. He was also Brewery Liaison Officer for Hepworth's Brewery for many years. His role as Regional Director took up a lot of his time and involved much travelling to meetings in the two counties but also nationally. He enjoyed meeting CAMRA members and could often be found propping up a bar discussing the topics of the day with a smile on his face and a beer or a cider/perry in his hand.

A lot of the work he did you would hear little of such as on conference procedures committee, amongst others, where his keen mind was exercised in protecting the rights of grassroots members from unwitting changes to the campaign's rules and campaigning for equal rights.

Members will remember Chris being very helpful, notably when the CAMRA members weekend and AGM came to Eastbourne in 2009. He was always available for advice, but was not one for regimentation, better a brief meeting and to sort the issues out over a pint. This was probably no better seen as when he was asked the difference between a formal CAMRA meeting and a social when his reply was "you can get away with a lounge suit at a social".

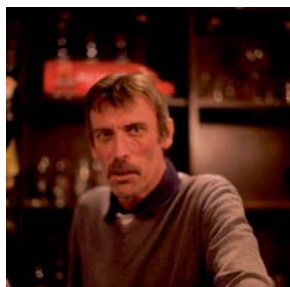
Chris leaves behind his wife Penny, who originally enrolled him in the Campaign nearly 30 years ago. He will also be greatly missed by his friends and colleagues in North Sussex and the rest of the Campaign.

Let's raise a glass to Chris. Cheers mate.

**Paul Sanders**

---

## IAN COX



Ian Cox, landlord of the Fox & Flowerpot, Goldsworth Park, Woking, sadly passed away in early January this year. Whilst Ian was not widely known within CAMRA circles he campaigned tirelessly for a better deal for tenants of pubco's earning a great respect from those that knew him. Ian the youngest of 5 children joined the Army in 1979 and spent 22 years serving in the Royal Electrical and Mechanical Engineers followed by a further 10 years in the defence industry.

Later in life Ian had a career change becoming landlord of the Fox & Flowerpot, an ideal place to enjoy his love of football (Chelsea in particular) and Formula 1. He would watch both of these sports from his

lucky bar stool which would bring wins – sometimes!

Ian leaves 2 sons, Darren and Piers to whom we extend our condolences.

**Ian Johnson**

# Brewery News



## **DORKING BREWERY, Capel**

<https://dorkingbrewery.com/>



Dorking Brewery continues to grow apace. Kegging and bottling in house now bring everything under control. Last November the new 50 hl brewery was commissioned so that cask ale production could keep up with demand.

2018 has continued to see double digit growth and the new kit now keeps pace. Quality, efficiency and repeatability have all substantially increased. 'We enjoy dry hopping some of our beers,' explained Ted Carey, Lead Brewer, 'and when we mention a hop there is enough in there to taste it. So, for some of our styles the keg format is perfect, it really allows the hops to shine. Our cask ale customers demand clear beer but the kegs are un-fined and unfiltered, keeping all the flavour in the beer. The added bonus is that these beers are now vegan friendly.'

'We decided on metal kegs for several reasons,' commented Neel Singh, owner of Dorking Brewery. 'Reusable kegs are more environmentally friendly and we feel they offer greater consistency at present.'

'The choice of bottles over cans was more difficult. Maybe cans are the future but the bottling line gives us much more flexibility for quick, short runs and different sizes. It is a format that sits equally comfortably in a bar or an off-licence or a local farm shop.'

An established brewery with a change of hands just over two years ago, the impressive growth in that time would suggest Dorking Brewery are doing it right.

## **FRENESHAM BREWERY, near Farnham**

[www.frenshambrewery.co.uk](http://www.frenshambrewery.co.uk)



Two new beers have been added to the permanent range: i.PA India Pale Light and i.PA India Pale Ale. The tap room opening has been increased to include Sundays now - 12-6pm Fri & Sat; 12-4pm Sun. The business is now known as Craft Brews @ Frensham Brewery.

**Chris Hunt**

## **GODSTONE, Godstone**

[thegodstonebrewers.com](http://thegodstonebrewers.com)

Godstone Brewers are well settled in their brewery at Flower Farm and are slowly increasing capacity taking over the neighboring unit enabling a third fermenter to be added and storage areas being brought closer

to the main brewing unit. They continue to run 'Good Beer Fridays' where from 5pm to 8pm two of their ales are available in cask in the Flower Farm Shop (where their bottled ale is always available), with a larger event on the first Friday each month held in the farm's Tithe Barn.

**Andy Poole**

## **HOG'S BACK, Tongham**

[www.hogsback.co.uk](http://www.hogsback.co.uk)



The installation of the new hop kiln has been delayed for this summer, as resources are being concentrated on the new hop garden. The new deadline is spring 2020. A tap room space is planned for the hop kiln.

It is hoped that the current hop harvest will take place in August/September.

A summer bar has been set up between the office and the brewery shop, which can be used for brewery tours, visitors and locals. Opening times are Thursdays through to Sundays, Thurs/Fri 5.00pm to 8.00pm, Saturday 12.00 to 9.00pm and Sunday 12.00 to 4.00pm. It will be available up to 8 September.

Little Swine, the low alcohol beer is selling well in Mitchell and Butlers pubs, and Tesco are taking it in bottled form.

An anniversary ale is being brewed to mark the 40th anniversary of Phyllis Tuckwell hospices, and 10p a pint will go to the charity.

Progress in the hop field is slow at present, following the move to the larger acreage, as the plants were disturbed, but there is confidence regarding a good harvest, with 50% of the breweries total use being available.

The hop harvest party will take place on Saturday 14 September, and green TEA will be available. Tickets are on sale on the web site.

Hog IPA is selling well, and Hog Star will be available in cans soon. There is a push to increase sales with free trade pubs.

**Peter Haywood**



## **LITTLE BEER CORPORATION**

[www.littlebeer.co.uk](http://www.littlebeer.co.uk)

The brewery was sold to the Crafty Brewing Company.

## OXTED

[theoxtedbrewery.co.uk](http://theoxtedbrewery.co.uk)

The brewery continues to operate from a purpose-built lean-to attached to their home.

Andy Poole

## PARK BREWERY, Kingston

[theparkbrewery.com/](http://theparkbrewery.com/)

The new brewery is now producing at Unit 7, Hampden Road, KT1 3GH. They do not yet have permission for on sales but are open for Off sales, mainly at weekends; see [www.theparkbrewery.com](http://www.theparkbrewery.com). As well as draught beer there is an emphasis on cans now rather than bottles. The usual range is being produced but also some experiments.

David Morgan

## PILGRIM, Reigate

[pilgrim.co.uk](http://pilgrim.co.uk)

The new owners of the brewery have been in charge for two years now and have opened The Pilgrim Brewery Tap Room in what was the former ground floor offices of the brewery. Open from 4pm to 10pm on Thursdays, Fridays and Saturdays it offers five of the brewery's ales each weekend.

Andy Poole

## THAMES SIDE BREWERY

Staines-upon-Thames

<http://www.thamessidebrewery.co.uk/>

The brewery has now moved to the south side of the river and is expected to re-open on 21<sup>st</sup> August.

Les Strange

## THURSTONS BREWERY, Horsell

[www.thurstonsbrewery.co.uk](http://www.thurstonsbrewery.co.uk)



Thurston's two milds, Horsell Invader (light) and Ruby Mild (dark) were both brewed during the spring. Stedman Ale has also made a comeback. The brewery was represented by both Milk Stout and Saison at this year's Great British Beer Festival. Thurstons also had their now traditional presence at the Woking Food and Drink festival on the weekend of 31 August when they launched a Vermont India Pale Ale at 4.2% ABV. Un-American Pale Ale recently featured in Des de Moor's article in CAMRA's Beer magazine when he took a look at beers that have been brewed using new style hops grown in this country. His says that "in the glass it does not disappoint, with a pineapple and pine aroma, peppery mango and peach on the palate, and a definite English character to the finish."

Nick Banyard

## TITSEY

[www.botleyhill-farmhouse.co.uk/](http://www.botleyhill-farmhouse.co.uk/)

[blog/2017/07/toast-taste-titsey/](http://blog/2017/07/toast-taste-titsey/)

Mainly supplying the Botley Hill Farmhouse (where it is currently located) and the White Bear, Fickleshole, this small brewery is now supplying other local outlets. Having raised funds through Crowdfunding the brewery is in the process of expanding to a 5BBL plant which will require a move to larger premises although still on the Titsey Estate land.

Andy Poole

## TILFORD BREWERY

[www.tilfordbrewery.beer](http://www.tilfordbrewery.beer)



Tilford had a good Farnham Beerex and the beer went down

well. The special Maltings beer seemed to sell well. They have done a collaboration brew with Windsor and Eton called Jurassic Coast. It is business as usual with Red Mist taking up most of their production schedule to supply the Red Mist pubs.

Andy Gilbert




[www.thesussexoak.co.uk](http://www.thesussexoak.co.uk)

We are a country pub situated deep in the heart of Sussex. Here you will find a large selection of local and national ales on 8 hand pumps.

We have an extensive food menu prepared from fresh local ingredients.

Fresh local food served lunch and dinner Monday to Sunday.

**The Sussex Oak**  
**2 Church Street**  
**Warnham**  
**Nr Horsham**  
**RH12 3QW**




**Large Garden and field.**

**Celebrating 18 years in the Good Beer Guide**  
 Come and celebrate Great Beer in front of our roaring log fire

01403 265028  [The-Sussex-Oak-at-Warnham](https://www.facebook.com/The-Sussex-Oak-at-Warnham)

# Village Wins Winter Pub Award



On Tuesday night 15<sup>th</sup> January 2019 members of the Kingston & Leatherhead CAMRA (Campaign For Real Ale) branch visited the Walton Village pub, in the High Street at Walton on Thames. This was to make a presentation for the pub being voted their Pub Of The Season (Winter). This for a pub that in the last twelve months has improved in its general quality, and also

the quality and range of the real ales as voted for by branch members.

The presentation was made by the branch chairman, Richard Russell, to the pub managers Les and Dennice Strette, who have now been at the pub for just over one year. This pub is now owned by the Urban Village Co, who also have several more pubs in the southern areas. The bar was given a general refurbishment in their modern urban style, and now incorporates an open kitchen. This is a family friendly pub, and doggy friends are also welcome, with their owners that is. During the week Monday is poker night, while the popular quiz night takes place on Thursdays. For those wanting something slightly more active there is a table where table tennis can be played up in the side area, while to the rear tables are more for dinning. A pleasant evening was had by all by enjoying the three real ales that were on, and the pizzas were appreciated which were generously laid on as well.

## The White Hart

[www.thewhiteharttongham.co.uk](http://www.thewhiteharttongham.co.uk)



Tel : **01252 782419**

76 The Street, Tongham, Surrey. GU10 1DH  
Email: [whiteharttongham@hotmail.co.uk](mailto:whiteharttongham@hotmail.co.uk)

*Nestled inside the iconic Surrey Hills is The White Hart Tongham. Prepare yourselves for a warm welcome served up with traditional real ales and exquisite home cooked food.*

### Surrey & Hampshire Pub of the Season Winter 14/15

- Great selection of real ales on tap available from local breweries and all over the UK – rotating between 7 and 8 on a regular basis.
- Food served daily (except Monday), Our menu features local produce offering children's portions and of course a full Sunday Roast.
- Dog & Family Friendly
- Large, attractive beer garden – both front and rear, including a new raised decking area
- Only 500 yards from the local Hogs Back Brewery – tour groups welcome
- Regular Entertainment evenings
- Major Debit and Credit Cards accepted
- Sky Sports HD & BT Sport now available
- New Menu available



# Pub News Roundup



## OLD WOKING

### Crown & Anchor

Closed and shuttered up at the end of May. **KT**

## SEND

### New Inn

The "Cask Marque" accredited New Inn is now in its 2nd year under Mark & Maxine. The pub is nice and cosy and seems to be much busier than previously. Both food and ale quality are very good. The former restaurant area is now used as an overspill for the bar or for events. The beer range is Sharp's Doom Bar, Fuller's London Pride, Adnam's Ghost Ship, Hog's Back TEA and a house beer by Marston's. **Michael Pullen**

## SHALFORD

### Queen Victoria

The Queen Victoria is most definitely a family pub and the two Guinea pigs (in a hutch in the garden) were named by a little girl whose family go there regularly. Their names are Pepper-Pig and Suzi Sheep (though obviously one is not a guinea-sheep).

## SHEPPERTON

### Kings Head

A lot of years have passed since I last visited this pub and what a change! Refurbished and now has a lot more room. 2 real ales on, plus a King Thai restaurant, food was very good. Parking ok, if you get there early. **LS**

## STAINES-UPON-THAMES

### The Beehive

A welcoming 19th century traditional local back street pub. Tucked away off the Laleham Rd, recently spruced up outside. Public bar has a pool table and darts, whilst Saloon bar is wood paneled. The regularly rotated guest beer is drawn mainly from local micros, recently Thames Side Egyptian Goose. No food menu, but pickled eggs available. **LS**

### The Bells

Close to the Thames Path & St Mary's Church. A very clean and well-run pub, 3-4 real ales. Young's Bitter & Special, Tribute and Proper Job. Nice small patio garden with heaters in winter. Food, large range of daily specials and a function room for hire. This pub has a landlord who really knows how to run a Pub. **LS**

### The Retreat

A restaurant type of pub but since its refit has change and reduced its menu. The beers are from Breakspears & Marston range. **LS**

### Two Rivers

The pub has now been demolished and the construction of flats has now started. **LS**

### The Old Red Lion

This lovely old pub, located in a quiet corner of the town well away from the hustle and bustle but still a short walk from the Railway station. Parts of the building dating back to 1610. It has 3 real ales London Pride, Timothy Taylor (guest) and one from the Marston's range, on last visit. It offers good food at reasonable prices and has fortunately lost its unwanted tag of the "most expensive pub in Staines" thanks to a change of management. **LS**

### The Swan

This is a Fullers House with a full range and is the only pub in Staines to sell Gales HSB. Sometimes they also have a guest beer as well. Beer not cheap, but very well kept, packed in the summer. **LS**

### The Star

now up for sale, no other news. **LS**

### Wheatsheaf & Pigeon

The pub has now been up for sale for the existing short lease of 8 years. A real community pub, close to the Thames, has a small restaurant selling good reasonably priced food. 5 beers on, London Pride, Otter Ale, plus 3 guest beers. **LS**

## STANWELL

### Wheatsheaf

It was one of the best pubs in the village but sadly now closed and boarded up. Now up for sale @ £450,000 + VAT. **LS**

## UPPER HALE

### The Alfred

This free house continues, in our opinion, to be the best pub for real ale and food in the Farnham area. The pub has become very popular for Sunday lunch, great food, booking essential and all the while maintaining ales in excellent condition. Sunday just gone 5 ales

available, including a very enjoyable Great Heck Proverbs 31:7 which warranted a 4 rating, the others 3.5. It's a bit off the beaten track but is on a well-served bus route from Aldershot or Farnham. There was live music on Sunday. **MV**

### WEYBOURNE

#### Running Stream

A super little friendly locals pub now being run by a new landlady Carolyn. Not too much has changed but she has introduced a slightly enlarged menu for the home cooked food but still at the previous great value. Evening meals are now also served between 6pm to 8pm. Supplementing the always well-kept Greene King Abbot, IPA and Old Speckled Hen is a guest beer off the Greene King list. Quiz nights are held on Wednesday and Sunday nights and for the summer the garden has been improved. **Tony Lea**

### WEST BYFLEET

#### Camphill Club

On last night's branch social we went, among other places, to the Camphill Club in West Byfleet. I tried a bottled light ale from Greene King that I've not seen before. I'm guessing it's to rival the Courage Light Ale, whose current provenance is a little confusing to say the least. **J and J**

### WOKING

#### Fox & Flowerpots, Goldsworth Park

Following a period of closure, a new landlord called Brendan has taken this pub on. He is starting to slowly see how things go with Doombar and St Austell Tribute as regular beers with a changing guest from El list. The guest beer on my visit was Eagle IPA which unfortunately has proved unpopular, Sharps Cornish Coaster was the next on the list. I chose a pint of Tribute and was not disappointed. Brendan hopes to start doing food soon, hopefully this might attract more visitors to the pub. **Ian Johnson**

#### Rowbarge, St John's

Temporary landlord Andy has taken this pub on a permanent basis. The pub remains similar with letting rooms and food offerings along with a family garden. Beers on offer when I visited were Doom Bar, Marston's Razorback and Wainwright. Beers did change for a while from Star Pubs list however the current line-up has been regular for a couple of months. **IJ**

### Woking Railway Athletics Club

I've not been before and love the external signage. Three bits of history right there, Whitbread, Courage and British Rail. Whitbread's Tankard Ale was a 1970's brew which was on a terminal decline ten years later. Of course, Whitbread itself no longer brews and Courage are just a brand used by Charles Wells (Marston's). The club has recently been awarded the Surrey Hants. borders CAMRA club of the year and continues to serve excellent beer. **J&J**

### YATELEY

#### The Dog & Partridge

This is a Heineken Star pub, with a range of beers available through the flexible arrangements that are on offer through them. Mark plans to keep at least three cask ales available at all times, and supports the "Locale" project, with suppliers including Ascot, Andwells and Hogs Back brewery. Doom Bar is a regular beer at present and luckily also St Austell's Tribute, which was very much to my liking. London Pride is often available and, on this occasion, Ruby Ale from Hobgoblin. A new arrival is eagerly awaited, Gem Ale from Bath Ales. **Harry Fish**

**IRVING & CO. BREWERS LTD.**

*Invincible Ales from Portsmouth*

Brewery Tours and direct sales to the public available.  
Please contact us for more details.

**FRIGATE**  
• GOLDEN BITTER •  
3.8% ABV  
PORTSMOUTH HAMPSHIRE

**INVINCIBLE**  
• PREMIUM CASK ALE •  
4.6% ABV  
PORTSMOUTH HAMPSHIRE

Unit G1 Railway Triangle, Walton Rd, Portsmouth, Hampshire PO6 1TQ  
Tel: 02392 389988 [www.irvingbrewers.co.uk](http://www.irvingbrewers.co.uk)  
email: [sales@irvingbrewers.co.uk](mailto:sales@irvingbrewers.co.uk)

# Headscratcher No.86 Results



The winner of Headscratcher No 86 was **Mike Clifford** of Effingham and the draw was made by Chris Barrett from The Crossways, Churt.

Correct entries were also received from Ian Amy, John Barker, Phil & Rose Bell, Dennis Batty, John Bay-ley, Diane Burnell, Lawrence Cole, Richard Conway, Barry Cox, Jane Cox, Jennifer Davis, Jim Davies, Norman Donachie, George French, Jim Grant, Paul Gray, Alison Henley, John Hook, M.K. Jobson, Martin Jones, Julie Lee, John Marshall, Iain Murray, Mark Nichols, Mark Preece, Deena Rudolph, Colin Traynor, Shirley Underwood, John William-son.

There were 2 incorrect entries

E	M	B	E	R		I	M	P	E	A	C	H
N		A		E		N		R		M		E
D	E	R	I	D	E	D		O	N	I	O	N
E		O		T		R		N		A		N
M	A	N	N	A		A	L	G	E	B	R	A
I				P	A	G	E					L
C	O	M	P	E	L			E	N	D	E	A
		A				E	A	S	E			E
C	O	N	T	E	S	T		M	A	L	E	S
R		A		N		T		E		A		I
U	R	G	E	S		A	S	S	U	R	E	D
M		E		U		C		I		G		E
B	E	R	S	E	R	K		S	H	O	E	S

## IS YOUR PINT NOT A PINT? UNHAPPY ABOUT THE QUALITY?

Should you be served with a pint that you feel is a short measure, always ask for a top up. If you feel that reasonable requests for a legal measure are not being honoured, you should contact your local Trading Standards Department:

Surrey 01372 371700 / Hampshire 0845 6030081. Please let us know for our records.

## Subscribe to News and Ale

To ensure that you always get a copy of **News and Ale**, why not subscribe?

Fill out the form and send it with a cheque payable to  
 "CAMRA Surrey/Hants Borders Branch" for £3.00 for 5 issues to:  
 Ian Nunn, 18 Brookside Park, Hawley Lane, Farnborough, GU14 9AZ

Name: .....

Address: .....

Postcode: .....Tel No: .....

1st Issue Required (Issue No.)

# Surrey Branches Social Diary



This diary has events from the following branches

**East & Mid Surrey (EMS) covering Boroughs of Reigate & Banstead, Tandridge, and Dorking.**

Contact: Roy Golding [eams@camrasurrey.org.uk](mailto:eams@camrasurrey.org.uk)

**Kingston & Leatherhead (K&L) covering Kingston Borough, Leatherhead & Elmbridge.**

Contact: Clive Taylor 020 8949 2099 (H)

[ctaylor2007@freeuk.com](mailto:ctaylor2007@freeuk.com)

Or where noted: Adrian Palmer 07774 859871 (M)

[akpalmer@talktalk.net](mailto:akpalmer@talktalk.net)

You can also find us on Facebook or follow us on Twitter [@CAMRAKL](https://twitter.com/CAMRAKL)

**Surrey Hampshire Borders (SHB) includes Guildford, Surrey Heath, Waverley & Rushmoor Borough.**

Contact: Les Murrell [shb@camrasurrey.org.uk](mailto:shb@camrasurrey.org.uk)

The Surrey Hants Borders branch of CAMRA uses a Yahoo group to keep in touch with members on a regular basis, advising of changes in the social programme, sharing pub news, and providing lots of information about Branch activities.

Join the SHB Yahoo group at:

[http://uk.groups.yahoo.com/group/shb\\_camra/](http://uk.groups.yahoo.com/group/shb_camra/)

You can find the latest socials for all the branches on the Surrey CAMRA website:

<https://surrey.camra.org.uk>

## SEPTEMBER 2019

**Thursday 19<sup>th</sup> Frimley Green and Mytchett crawl (SHB)** 7.30pm Rose and Thistle GU16 6HT. 8.30pm Miners Arms GU16 6EZ. 9.30pm Kingfisher on the Quay GU16 6DS. Leader is Kevin Travers.

**Monday 23<sup>rd</sup> September Line Cleaning at Robin Hood (Guildford) at 6pm (SHB).** Limited to 15 people. Leader is Mick Bell.

**Thurs 26<sup>th</sup> Woking Beer Festival publicity pub crawl of Woking.** Meet Wheatsheaf, 7:30pm, Junction Tap 8:30pm and on to other Woking pubs. Leader Ian Johnson.

**Sat 28<sup>th</sup> Day trip on the train to visit pubs in Tunbridge Wells (K&L).** Travel on the 11.48 Waterloo East, arr 12.39. To the Ragged Trousers, Pantiles TN2 5TN, Mount Edgcumbe Hotel (2pm), The Common TN4 8BX, the George (3pm), Mount Ephraim TN4 8AA, Fuggles Beer Café (4pm) Grosvenor Rd, Opera House (W'spoon's) (5pm) Mount Pleasant Rd TN1 1RT and the

Bedford, High St (6pm) by the rail station.

**Monday 30<sup>th</sup> Farnham Crawl (SHB)** 7.30pm Albion GU9 9QH. 8.15pm Nelson Arms, GU9 7JQ, 9pm Hop Blossom GU9 7HX 9.45pm Conservative Club GU9 7SB. Leader is Chris Hunt.

## OCTOBER 2019

**Wed 2 – Social including 8pm presentation of Certificate of Excellence, Radius Arms (EMS),** 205 Godstone Road, Whyteleafe (CR3 0EL), 7:30pm.

**Wed 2<sup>nd</sup> 8.15pm Branch meeting at the Royal Oak (upstairs room) (K&L),** Coombe Rd, New Malden KT3 4DR TBC

**Saturday 5<sup>th</sup> Up and Down the City Road (SHB).**

Meet 11:30am at Brewhouse and Kitchen, Torrens St. Visiting the following pubs, Charles Lamb, 16 Elia St. Plaquemine Lock, 139 Graham St. Earl of Essex, 25 Danbury St. Duke of Cambridge, 30 St Peter's St. Island Queen, 87 Noel Rd. Wenlock Arms, 26 Wenlock Rd. The Eagle, 2 Shepherdess Walk. Old Fountain, 3 Baldwin St. Leader Mick Bell

**Wednesday 9<sup>th</sup> Camberley and Frimley crawl (SHB)** of two reopened pubs The Station Tap (7:30) and then the Railway Arms (with bus connection). Leader Doug Fish.

**Thurs 10<sup>th</sup> 8pm, Pub of The Year Presentation at the Albion (K&L),** Fairfield Rd, Kingston KT1 2PY

**Saturday 12<sup>th</sup> From 1pm on Prince of Wales Beer Festival (SHB),** Farnborough, GU12 5HS.

**Tuesday 15<sup>th</sup> Visit to The Admiral (was Napiers) GU21 5HS. (SHB)** in Ash Vale (7:30) and the Lion Brewery in Ash, followed by curry at the former Nightingale. Leader is Kevin Travers.

**Wed 16<sup>th</sup> 1pm, An afternoon wonder around Long Ditton, Surbiton (K&L).** Meet in the George Evelyn, Ditton Hill Rd KT6 5JD, then to the Limping Fox (2pm) Rushett Rd KT7 0UX, Angel (3pm) Portsmouth Rd KT7 0AU, City Arms (4pm) Portsmouth Rd KT7 0XE and the Lamb (5pm) Brighton Rd KT6 5NF.

**Monday 21<sup>st</sup> October 8:30pm, Branch Meeting (EMS),** Crown Inn, 53 High Street, Oxted, RH8 9LN

**Thursday 24<sup>th</sup> 8pm Branch Meeting at The White Lion, GU12 4EA. (SHB),** Aldershot.

**Thurs 31<sup>st</sup> Goldsworth Park and Knaphill Area Crawl (SHB).** Meet at Fox and Flower Pot (7:30) then Royal Oak for 9:00 (bus connection). Bus 91 from Woking Station, £5 Woking day ticket. Leader is Ian Johnson.

**Thu 31 Oct to Sat 2 Nov – Redhill Beer Festival (EMS)**, Merstham Village Hall, Station Road North, Merstham, RH1 3ED.

## NOVEMBER 2019

**Friday 8<sup>th</sup> – Saturday 9<sup>th</sup> (SHB)** Woking Beer Festival, Woking Leisure Centre GU22 9BA

**Saturday 16<sup>th</sup> November 3:00pm, Social including presentation (EMS)**, Three Horseshoes, 4 High Street, Cranleigh, CR3 0EL

**Wed 20<sup>th</sup> Fleet Crawl (SHB)** starting at The Fox and Hounds, GU51 5NP 7:30. Prince Arthur, GU51 4BX, 9:30. Leader Tony Lee.

**Mon 25 – Branch meeting (EMS)**, Hatch, Redhill, 44 Hatchlands Road, RH1 6AT, 8:30pm

**Sat. 14<sup>th</sup> Marlow Royal British Legion Beer Festival (SHB)**. Includes pub crawl on way back. Catch 10:18 train from Reading to Maidenhead. Leader Ian Johnson.

## DECEMBER 2019

**Friday 6<sup>th</sup> Branch Christmas Party (SHB)** at Woking Railway Club, Goldsworth Road, GU21 6JT. From 7pm. Further details will be on the web site and the Yahoo group including the arrangements for ordering food.

## FESTIVALS

### Local CAMRA Festivals

**31<sup>st</sup> October to 2<sup>nd</sup> November** – Redhill Beer Festival

**8<sup>th</sup> & 9<sup>th</sup> November** – 26th Woking Beer Festival

**23<sup>rd</sup> to 25<sup>th</sup> April 2020** – 44th Farnham Beer Festival

### Pub & Club Festivals

**6<sup>th</sup> & 7<sup>th</sup> September** - Haslemere Beer Festival

**6<sup>th</sup> & 7<sup>th</sup> September** - G-Live Beer Festival, Guildford

**13<sup>th</sup> September** - White Hart, Tongham

**19<sup>th</sup> to 27<sup>th</sup> September** - Airport Inn, Horley

**11<sup>th</sup> to 13<sup>th</sup> October** - Prince of Wales, Farnborough

**24<sup>th</sup> to 26<sup>th</sup> October** - Alfred Free House, Upper Hale

### National CAMRA Festivals

**4<sup>th</sup> – 8<sup>th</sup> February 2020** - Great British Beer Festival Winter Birmingham, The New Bingley Hall.



**As our farmers  
know all too well:  
no pain, no grain.**

They say nothing worth having comes easy. Unfortunately for our farmers that's true of the barley we use to brew our beers. We use a classic variety called Golden Promise, grown to our own unique specification. The biscuity, golden malt it produces is the perfect partner to our natural spring water, and is vital to Landlord's depth and delicate balance of flavour. It's also a type of barley that's notoriously hard to grow, and our exacting specification makes it even more difficult. Which makes it a costly ingredient and a real challenge even for experienced farmers. Luckily we can offer some liquid therapy.

**All for that taste of Taylor's**

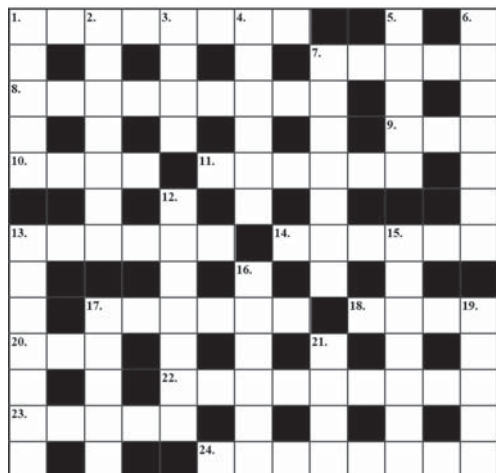


**BREWING REAL ALE  
THAT REAL ALE DRINKERS DRINK!**

**Triple  
fff  
Brewery**

**[www.triplefff.com](http://www.triplefff.com)**

# Headscratcher No.87



**£20 Prize Crossword**

## Headscratcher No.87 Xword Clues

### Down

1. 5. Just fish in 90 degrees. (5, 5)
2. A random separation before the final annulment can be acrimonious. (7)
3. Arrest the first naked actress in London. (4)
4. Please turn round and pass by. (6)
6. Lord Ted was unruly as a child. (7)
7. Cooking outside is boring. (7)
12. Believe and quietly carry on. (7)
13. Take flight from the slope with hesitation. (7)
15. Express dislike about everything new and swell. (7)
16. Dettol clears up the remains in the pipe. (6)
17. The law on the border is coping. (5)
19. Pen a French article on fashion. (5)
21. I jumped into an old swimming pool. (4)

### Across

1. Take the rest without a cue. (8)
7. Dance with beat and vitality. (5)
8. A regiment must move around to grow. (9)
9. The leading lady is destined to get to the top. (3)
10. Gin cart. (4)
11. Aim for unlimited praise. (6)
13. Burlesque tries a new approach. (6)
14. A strange rumble came from the wood. (6)
17. A damaged insole can cause an injury. (6)
18. What a shame! This collection of maps is missing Thailand. (4)
20. Egg collection. (3)
22. Join Mary and Tom in wedlock. (9)
23. The bird broke a leg after the last sortie. (5)
24. Run once over the final hurdle and give up. (8)

**£20 Prize Crossword.**

**Closing date for entries is 18<sup>th</sup> October.**

All correct answers will be entered into a prize draw. Entries to:

**William Hill, Pendennis, Frimley Road,  
Ash Vale, Surrey GU12 5NN**

**Name**

**Address**

# Join up, join in, join the campaign



Campaign  
for  
Real Ale

From  
as little as  
**£26.50\***  
a year. That's less  
than a pint a  
month!

Includes  
**£30**  
Real Ale  
Cider & Perry  
Vouchers

Protect the traditions of great British pubs and everything that goes with them by joining today at [www.camra.org.uk/joinup](http://www.camra.org.uk/joinup)

Or enter your details and complete the Direct Debit form below and you will receive 15 months membership for the price of 12 and save £2 on your membership subscription

Alternatively you can send a cheque payable to CAMRA Ltd with your completed form, visit [www.camra.org.uk/joinup](http://www.camra.org.uk/joinup), or call 01727 798440.\* All forms should be addressed to Membership Department, CAMRA, 230 Hatfield Road, St Albans, AL1 4LW.

## Your details:

Title ..... Surname .....  
Forename(s) .....  
Date of Birth (dd/mm/yyyy) .....  
Address .....  
..... Postcode .....  
Email address .....  
Daytime Tel .....

## Partner's Details (if Joint Membership)

Title ..... Surname .....  
Forename(s) .....  
Date of Birth (dd/mm/yyyy) .....

## Direct Debit

## Non DD

### Single Membership (UK)

£26.50

£28.50

### Under 26 Membership

£18

£20

### Joint Membership

£31.50

£33.50

### (At the same address)

### Joint Under 26 Membership

£23

£25

Please indicate whether you wish to receive *What's Brewing* by Email ☐ By Post ☐ and *BEER* by email ☐ OR post ☐

*What's Brewing*  
By Email ☐ By Post ☐

*BEER*  
By Email ☐ By Post ☐

Concessionary rates are available only for Under 26 Memberships.

I wish to join the Campaign for Real Ale, and agree to abide by the Memorandum and Articles of Association which can be found on our website.

Signed .....

Date .....

Applications will be processed within 21 days.



Campaign  
for  
Real Ale

## Instruction to your Bank or Building Society to pay by Direct Debit

Please fill in the whole form using a ball point pen and send to:  
Campaign for Real Ale Ltd, 230 Hatfield Road St. Albans, Herts AL1 4LW

### Name and full postal address of your Bank or Building Society

To the Manager ..... Bank or Building Society

Address .....

Postcode .....

### Name(s) of Account Holder

### Bank or Building Society Account Number

.....

### Branch Sort Code

.....

### Reference

.....

Banks and Building Societies may not accept Direct Debit Instructions for some types of account.



### Service User Number

9 2 6 1 2 9

### FOR CAMRA OFFICIAL USE ONLY

This is not part of the instruction to your Bank or Building Society

Membership Number

Name

Postcode

### Instructions to your Bank or Building Society

Please pay Campaign For Real Ale Limited Direct Debits from the account detailed on this instruction subject to the safeguards assumed by the Direct Debit Guarantee. I understand that this instruction may remain with Campaign For Real Ale Limited and, if so, will be passed electronically to my Bank/ Building Society.

Signature(s)

Date



This Guarantee should be detached and retained by the payer.

## The Direct Debit Guarantee

- This Guarantee is offered by all banks and building societies that accept instructions to pay by Direct Debits
- If there are any changes to the amount, date or frequency of your Direct Debit The Campaign for Real Ale Ltd will notify you 10 working days in advance of your account being debited or as otherwise agreed. If you request The Campaign for Real Ale Ltd to collect a payment, confirmation of the amount and date will be given to you at the time of the request
- If an error is made in the payment of your Direct Debit by The Campaign for Real Ale Ltd or your bank or building society, you are entitled to a full and immediate refund of the amount paid from your bank or building society
- If you receive a refund you are not entitled to, you must pay it back when The Campaign Real Ale Ltd asks you to
- You can cancel a Direct Debit at any time by simply contacting your bank or building society. Written confirmation may be required. Please also notify us.

# AWARD WINNING FREEHOUSE

OPENING: Monday to Thursday 11.30am to 2.30pm / 5.30pm to 11pm

OPEN ALL DAY FRIDAY, SATURDAY AND SUNDAY



Previous Winner of *CAMRA Wessex Region Pub of the Year*

**CAMRA Surrey Hants Borders  
HAMPSHIRE PUB OF THE YEAR 2009 to 2014**

## **THE PRINCE OF WALES**

**184 RECTORY ROAD, FARNBOROUGH, HAMPSHIRE GU14 8AL**

*Just two minute walk from Farnborough North Station*

*To see what is happening visit us at <http://www.theprinceinfarnborough.co.uk>*

Tel: 01252 545578

## **THE ALE EXPERIENCE**

*Also try  
Monday Curry  
Night or  
Friday Fish n  
Chip Night*

Come and try our extensive 'home cooked'  
**LUNCHTIME MENU**

Monday to Saturday 12 till 2pm

**TRY OUR SUCCULENT SUNDAY ROAST  
12 TO 4PM**

Recently introduced, Monday Curry Night & Fish Shop Friday 6 - 9pm!

**BEER FESTIVAL - 11TH - 13TH OCTOBER  
ALES FROM EASTERN UK MICROBREWRIES**



**ASCOT**

## **AUTUMN RACING WEEKEND & ASCOT BEER FESTIVAL**

**Friday 4<sup>th</sup> & Saturday 5<sup>th</sup> October**

Enjoy top class Flat racing on the track, then toast the unmissable occasion at the Beer Festival in association with CAMRA with a choice of over 200 real ales, perries and ciders.

**CAMRA Member Discount of over 40%**

Friday 4<sup>th</sup> October - Tickets **£10.50** per person (standard price £19)

Saturday 5<sup>th</sup> October - Tickets **£14.00** per person (standard price £26)

Book at [ascot.co.uk](http://ascot.co.uk) and quote **CAMRA2019**

*(max. 4 tickets per person, valid for Queen Anne Enclosure tickets only, must be booked in advance)*



**QIPCO**  
OFFICIAL PARTNER

**Gigaset**  
OFFICIAL PARTNER

**LONGINES**  
OFFICIAL PARTNER